

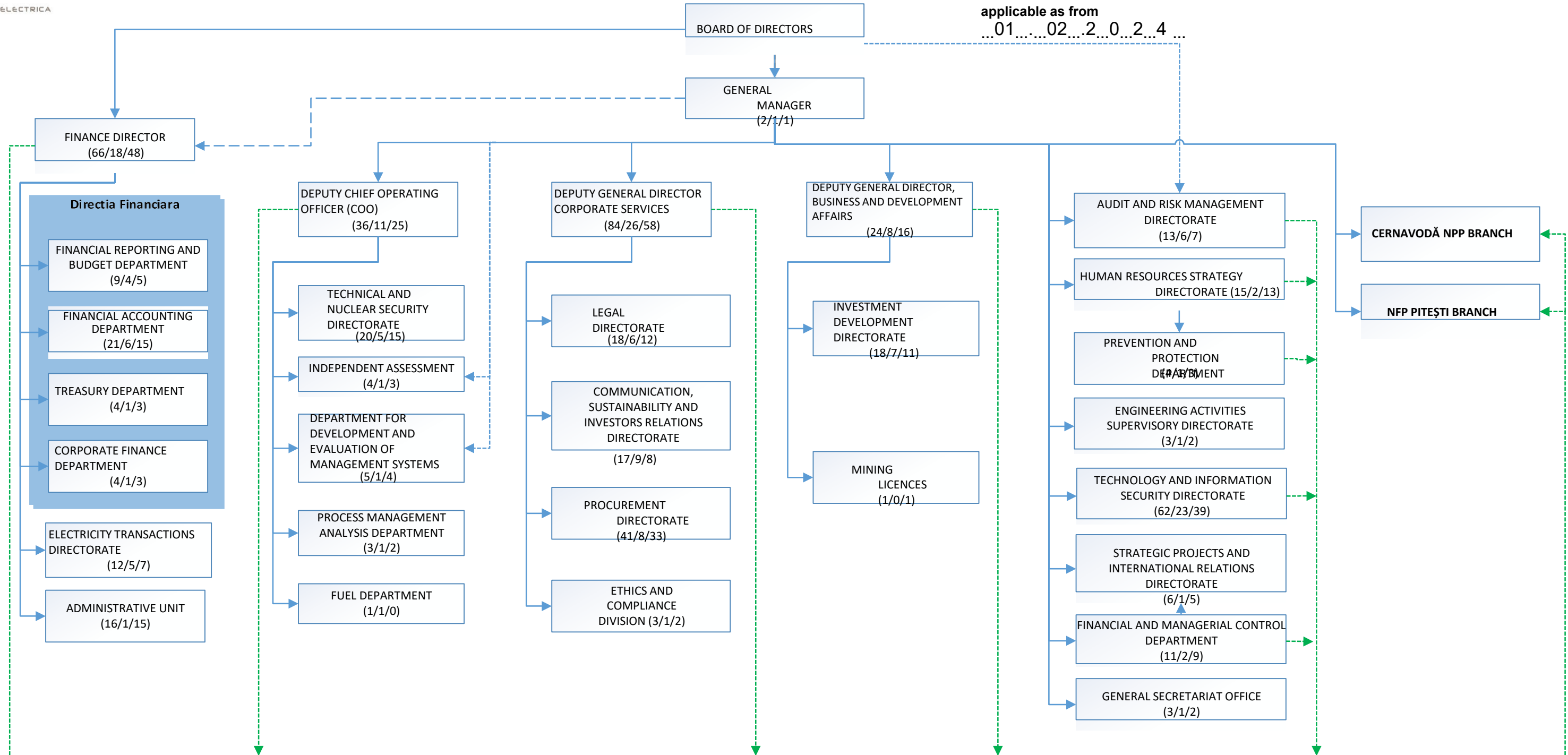


National Company “Nuclearelectrica” S.A.

ORGANISATION AL CHART

APPROVED
DIRECTOR GENERAL,
Cosmin GHITA

applicable as from
...01...02...2...0...2...4 ...



Hierarchical/Administrative Subordination*
Functional Subordination
Decision-Making Coordination
Operational Coordination
including through the
subordinated compartments in
the interface *)Administrative
Subordination corresponds to
the situation where the
organizational entity is also
functionally subordinated

MANAGER OF THE HUMAN RESOURCES
STRATEGY DIRECTORATE,
RALUCA ANDREEA NEDELCU

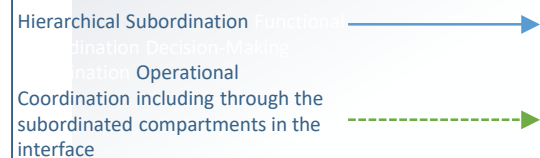
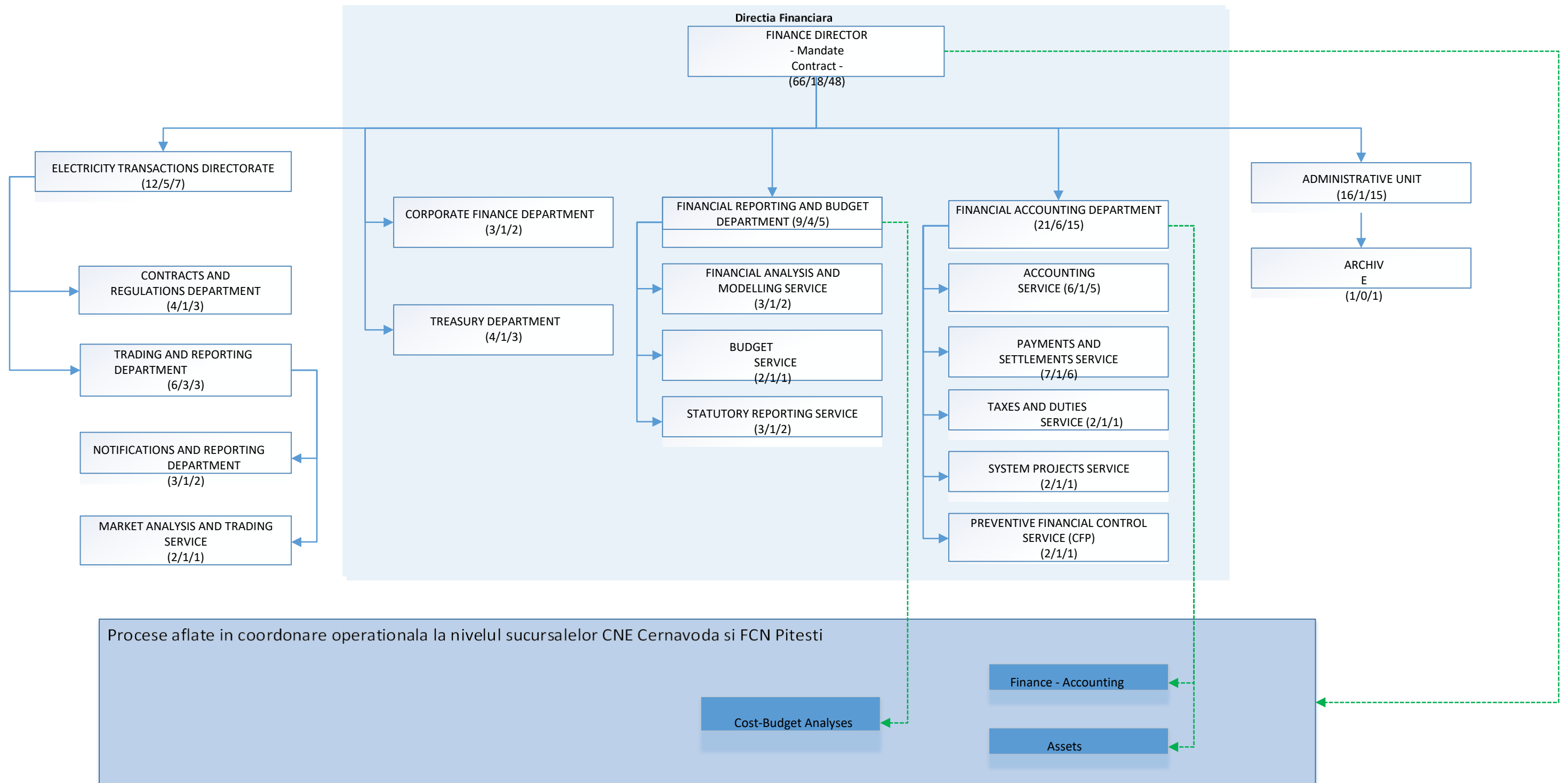
	No. of Jobs
Headquarters	325
Cernavodă NPP Branch	2048
NPP Pitești Branch	389
Total	2762



National Company “Nuclearelectrica” S.A.

**ORGANISATIONAL CHART
CHIEF FINANCIAL OFFICER**
applicable as from ...01...0...2.2...0...24.....

APPROVED
DIRECTOR GENERAL,
Cosmin GHITA



MANAGER OF THE HUMAN RESOURCES
STRATEGY DIRECTORATE,
RALUCA ANDREEA NEDELCU

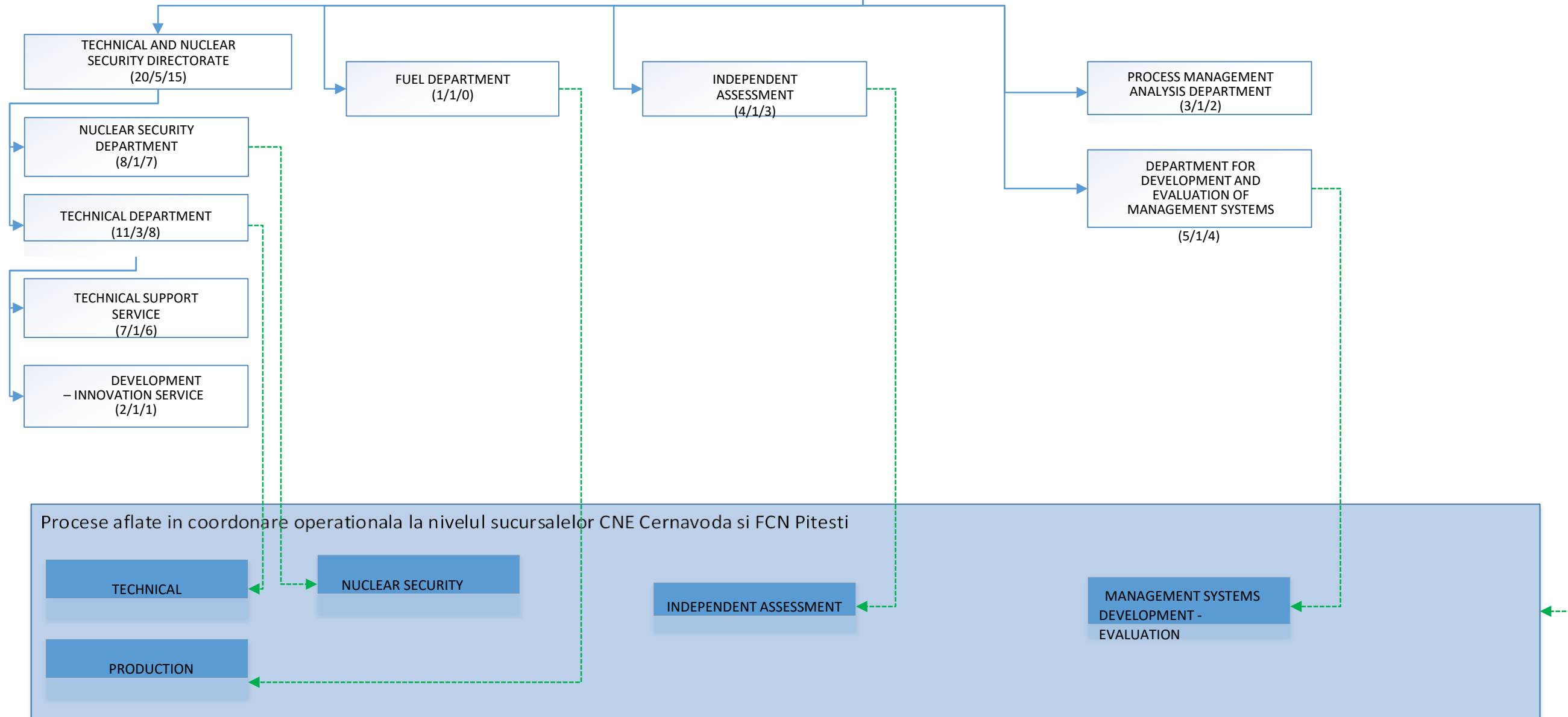


National Company “Nuclearelectrica” S.A.

ORGANISATION CHART
DEPUTY CHIEF OPERATING OFFICER (COO)
applicable as from ...01...02...2024.....

APPROVED BY
GENERAL MANAGER
Cosmin GHITA

DEPUTY CHIEF OPERATING
OFFICER (COO)
(36/11/25)



Hierarchical Subordination ———→
Functional Subordination ———→
Decision-Making Coordination ———→
Operational Coordination including through the subordinated compartments in the interface - - - - -→

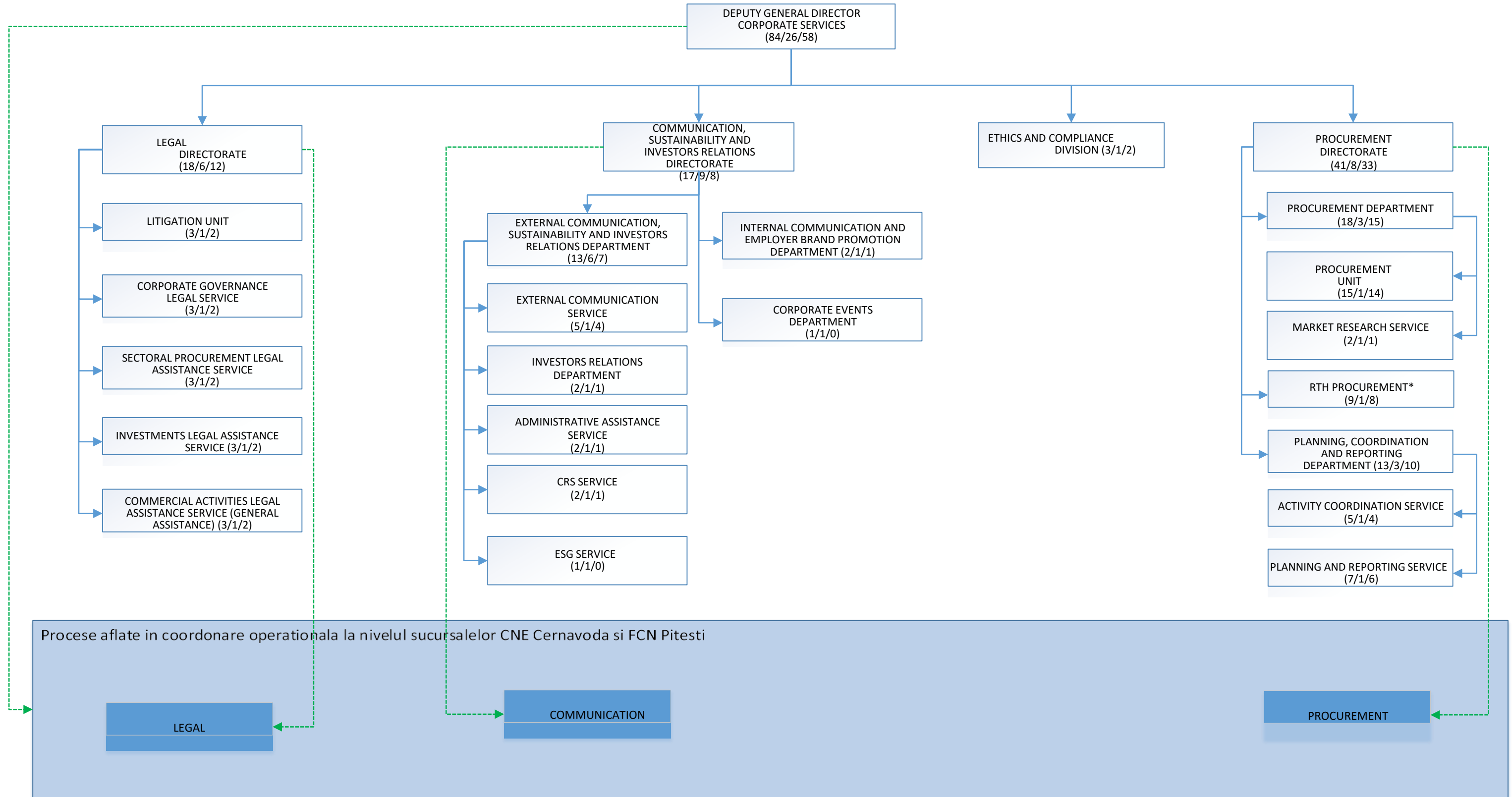
MANAGER OF THE HUMAN RESOURCES
STRATEGY DIRECTORATE,
RALUCA ANDREEA NEDELCU



National Company “Nuclearelectrica” S.A.

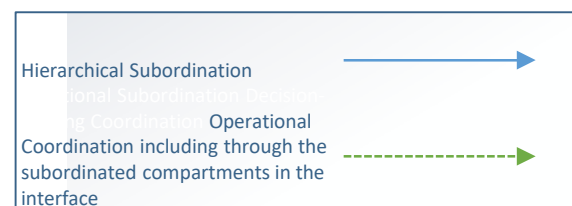
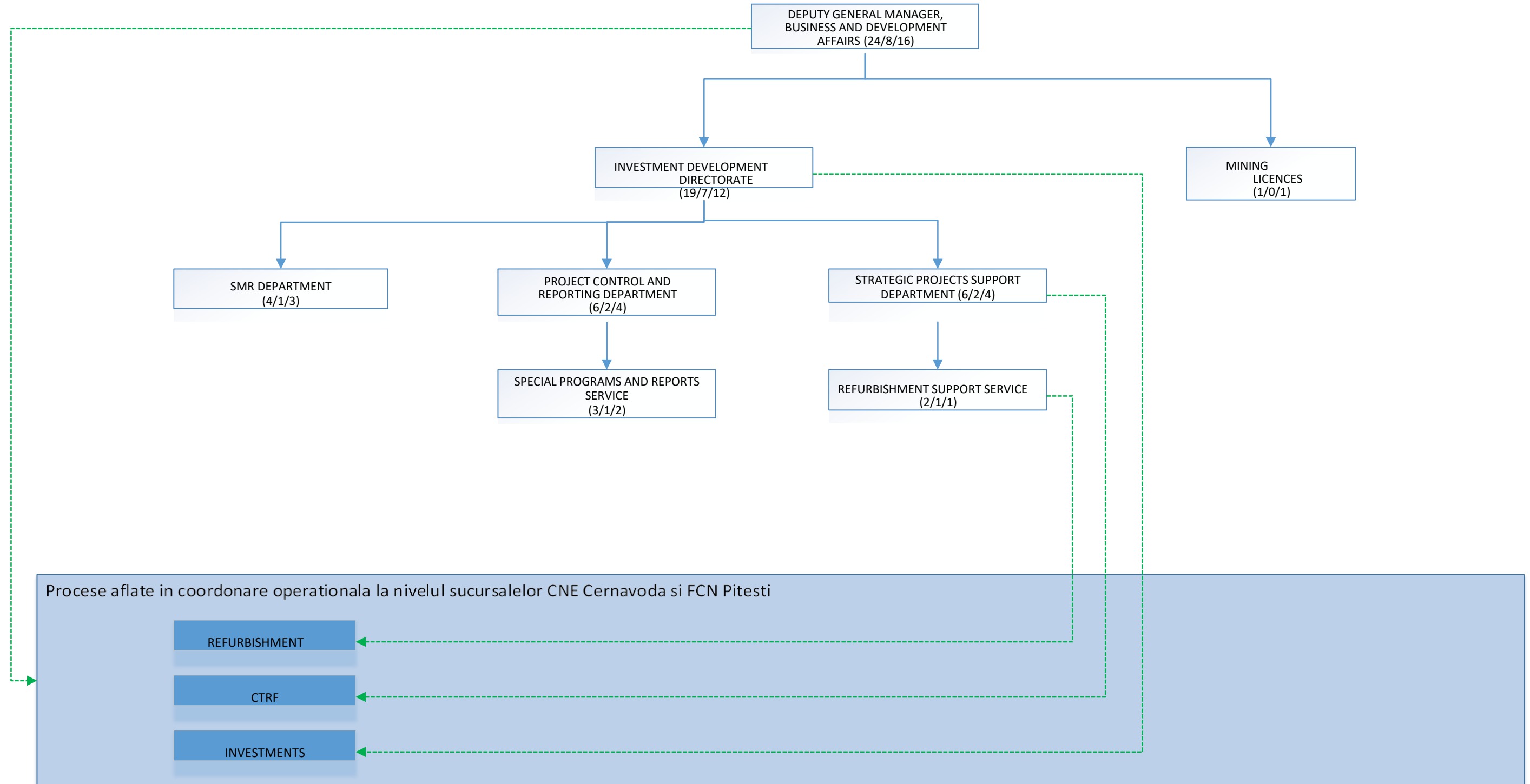
ORGANISATION
DEPUTY GENERAL DIRECTOR
CORPORATE SERVICES
applicable as from ...01...0...2...20...2...4
.....

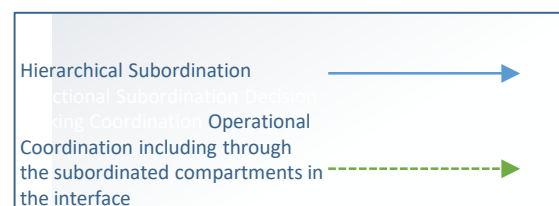
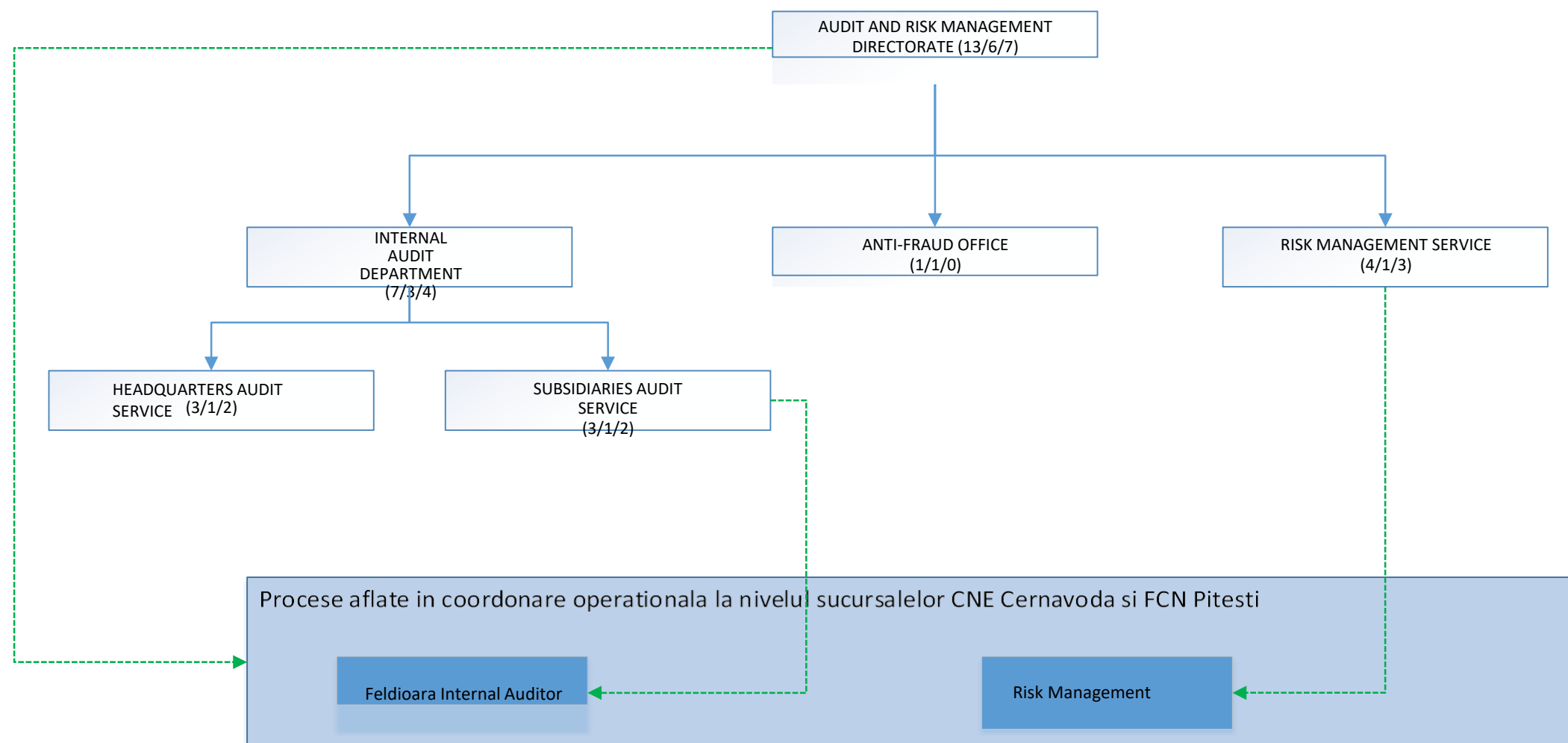
APPROVED
DIRECTOR GENERAL,
Cosmin GHITA

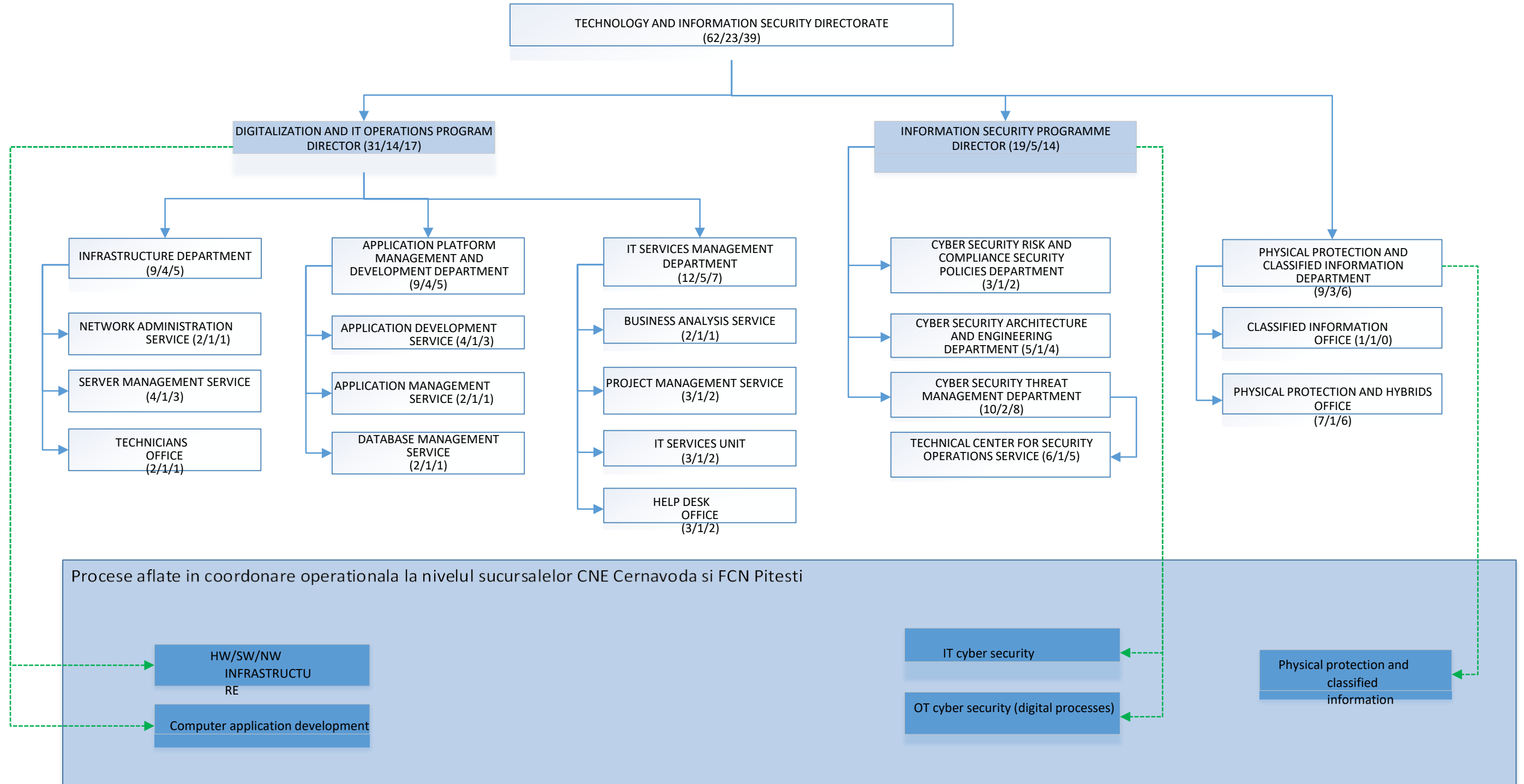


DIRECTOR OF THE HUMAN RESOURCES STRATEGY
DIRECTORATE, RALUCA ANDREEA
NEDELCU

*) The RTH Procurement Compartment is temporarily established to support the second phase of the refurbishment project of unit U1 - Cernavodă NPP, until 30 June 2024





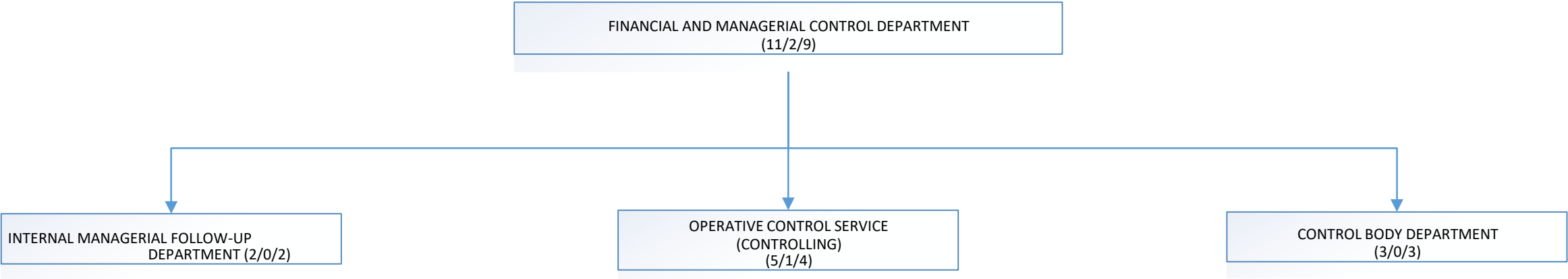




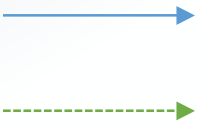
National Company “Nuclearelectrica” S.A.

ORGANISATION
FINANCIAL AND MANAGERIAL
CONTROL DEPARTMENT
applicable as from ... 01 ... 02 ... 20 ... 24

APPROVED
DIRECTOR GENERAL,
Cosmin GHITA



Hierarchical Subordination
Functional Subordination
Decision-Making Coordination
Operational Coordination
including through the
subordinated compartments in
the interface



MANAGER OF THE HUMAN RESOURCES
STRATEGY DIRECTORATE,
RALUCA ANDREEA NEDELCU